

SETTING A HIGHER STANDARD



SNOW RETENTION SYSTEMS

SNOWBRACKET™ SNOW GUARDS
CLAMP-ON SNOW FENCE
DECK MOUNT SNOW FENCE

T.R.A.-MAGE: SETTING A HIGHER STANDARD



Why choose T.R.A.-MAGE snow retention products?

Our snow retention product line saves property owners money and limits the possibility of personal loss. With our products, you can:

- Prevent danger to residents and guests.
- Prevent costly roof and property damage.
- Prevent limited access due to snow and ice blockage.
- Promote energy efficiency by retaining snow to serve as an insulating blanket.

Trust in the best with the highest quality snow retention devices.

So, let it snow! For your FREE Manufacturer-approved Design, visit our online snow bracket estimator  www.snowbracketestimator.com

DECK MOUNT SNOW FENCE

Deck-Mount Snow Fences are heavy-duty snow retention devices that provide continuous protection using rails, bars or pipes. These fences must be attached into the framing members of the roof (typically rafters or trusses). Deck-mount Snow Fences are used for a few reasons:

1. Increased height is needed for avalanching protection.
2. They are preferred aesthetically.
3. When pipes, rails or bars are preferred to provide continuous protection.



PRODUCT Highlights:

- Heavy Duty
- Custom Designs
- Up to 18" high
- Up to 4 rails
- Timber/log designs available

PRODUCT Information:

DESCRIPTION:

- DECK MOUNT SNOW FENCE: Available in a one to four pipe system
- PIPE: 10' sections, 1" Pipe (1.315"OD)
- UNIONS: Connect pipe lengths
- END CAPS: Used to seal open ends of pipe
- COLLARS: Prevent horizontal movement; Prevent pipe separation
- ICE FLAGS: Reduce snow and ice sliding under pipe

COLORS/FINISHES:

- Raw steel
- Electro-galvanized steel
- Hot-dipped galvanized steel
- Mill finish Copper
- Mill finish Cor-Ten®
- Powder coating available in RAL Standard colors
- Visit <http://tra-mage.com/color-chart/> to view color chart

MATERIALS:

- Steel :: 1/4" (ASTM A36)
- Copper :: 3/8" (ASTM B124)
- Cor-Ten® :: 1/4" (ASTM A606)

CLAMP-ON SNOW FENCE

The Clamp-on Snow Fence by T.R.A.-MAGE fits many roof profiles using a safe, reliable and attractive design. Our exclusive attachment system, using under-the-hem clamping and bolting, provides superior strength **while maintaining your manufacturer's warranty**. Its attractive appearance and proven performance make T.R.A.-MAGE's Clamp-on Snow Fences ideal for both commercial and residential projects.



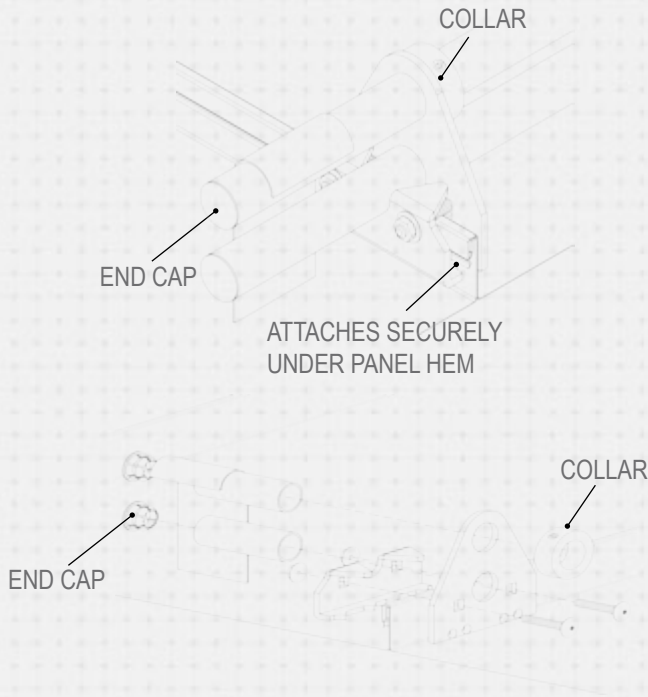
PRODUCT **Highlights:**

- Clamp-on designs work with virtually any seam type including:



- Easy-to-install
- **Does not penetrate** standing seam panel
- **Does not restrict** thermal expansion/contraction of the panel
- Firmly **attaches under the hem** to provide superior strength
- Secured with a bolt system to **eliminate sliding, detaching and thread stripping**
- Available in a **one or two or three** pipe system
- **Two layers of rust protection** (zinc plated and powder coated)
- Powder Coated for durability and protection from the elements
- Available in standard or custom colors to match panel/roofing color
- **Engineered system**
- Custom layouts provided
- Manufactured from recycled material

C-2-2-Z ASSEMBLY



PRODUCT **Information:**

DESCRIPTION:

- CLAMP-ON SNOW FENCE: Available in a one or two pipe system
- PIPE: Comes in 10' sections, 3/4" Pipe (1.056"OD)
- UNIONS: Connect pipe lengths
- END CAPS: Used to seal open ends of pipe
- COLLARS: Prevent horizontal movement; Prevent pipe separation
- ICE FLAGS: Reduce snow and ice sliding under pipe

COLORS/FINISHES:

- Electro-galvanized steel
- Hot-dipped galvanized steel
- Mill finish Copper
- Mill finish Aluminum
- Powder coating available in RAL Standard colors
- Visit <http://tra-mage.com/color-chart/> to see color chart

MATERIALS:

- Steel :: 16 ga (ASTM A879)
- Copper :: 48 oz. (ASTM B152)
- Cor-Ten® :: 16 ga (ASTM A606)
- Stainless Steel :: 18 ga (ASTM A240)
- Aluminum :: .063" (H32 - ASTM B209)

SNOW BRACKET™ SNOW GUARDS

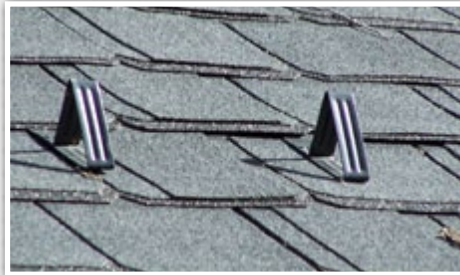
Our Snow Brackets™ snow guards are engineered from the fail point of the roof system, so that you can feel comfortable that the Snow Brackets™ will effectively retain the snow on your roof without problems. They are available for nearly every sloped roof type and are manufactured in the USA.

Concrete & Clay Tile

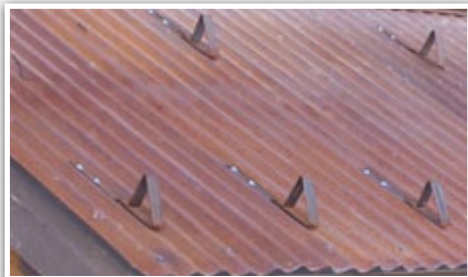


Metal

Asphalt Shingles



Slate & Simulated Slate



PRODUCT Highlights:

- Made from **recycled** materials
- **Easily installed** on existing and new construction
- **Superior Strength** - Tested from the sheathing up
- Made for **nearly every roof type**
- **3 part specs** available through our **snow bracket estimator**
www.snowbracketestimator.com and **online** at snow.tra-mage.com

PRODUCT Information:

COLORS/FINISHES:

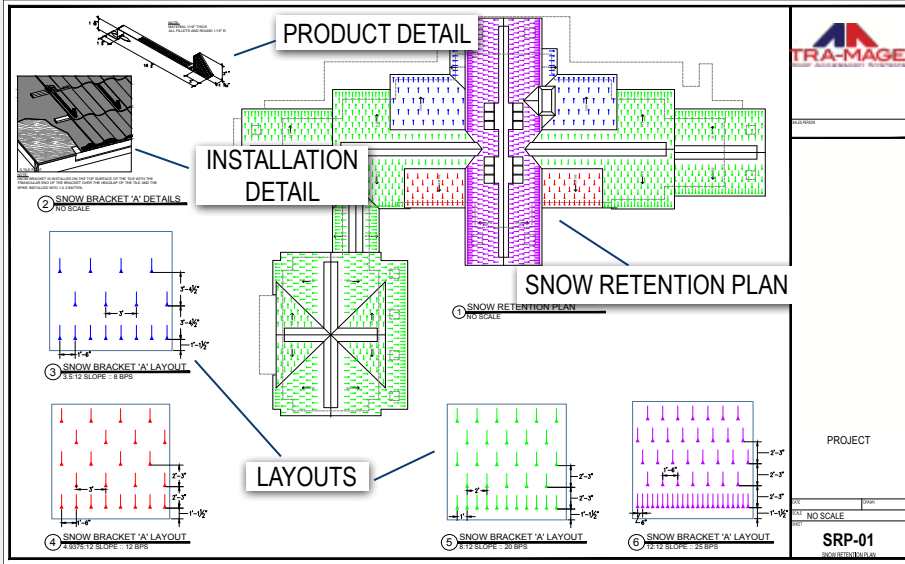
- Electro-galvanized steel
- Hot-dipped galvanized steel
- Mill finish Copper
- Mill finish Aluminum
- Powder coating available in RAL Standard colors
- Visit <http://tra-mage.com/color-chart/> to view color chart

MATERIALS:

- Steel :: 16 ga (ASTM A879)
- Copper :: 48 oz. (ASTM B152)
- Cor-Ten® :: 16 ga (ASTM A606)
- Stainless Steel :: 18 ga (ASTM A240)
- Aluminum :: .063" (H32 - ASTM B209)

LAYOUTS AND ENGINEERING

At T.R.A.-MAGE we engineer and layout each project upon request free of charge. We will give you the snow retention plan, layout and product detail. An example is shown below.



SNOW BRACKET™ ESTIMATOR

You can design your own project by visiting www.snowbracketestimator.com and generate **layouts**, **product data sheets**, **specifications** and **installation details** specific for your project.



SETTING A HIGHER STANDARD



As a specialized manufacturer of high quality roofing accessories located in the heart of the Rocky Mountains, T.R.A.-MAGE has long been actively engaged in optimizing roof protection by developing products with durable and effective performance in extreme conditions. You can prevent these problems from occurring with high quality roofing accessories from T.R.A.-MAGE.

Visit our website and Snow Brackets™ calculator to learn more about our products or call our experienced team of experts. They are there to support you in the planning and development of all your projects.

T.R.A.-MAGE, Inc.

1657 South 580 East | American Fork, UT 84003 | USA

Tel: 800-606-8980 | Fax: 801-756-7891

info@tra-mage.com | snow.tra-mage.com | www.snowbracketestimator.com