

SNOW BRACKET E-S

DESCRIPTION

- Designed for simulated slate, shake, asphalt shingle and metal roofs
- Can be powder coated to match roofing material color
- Overall dimensions: 8-1/8" L X 3"W X 2-7/8" H

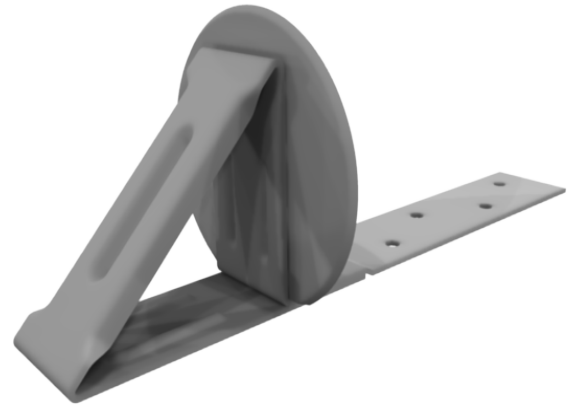
MATERIALS

- Steel :: 16 ga
- Copper :: 48 oz. (ASTM B152)
- Cor-Ten® :: 16 ga (ASTM A606)
- Stainless Steel :: 16 ga
- Aluminum :: .063" (H32 - ASTM B209)

COLORS/FINISHES

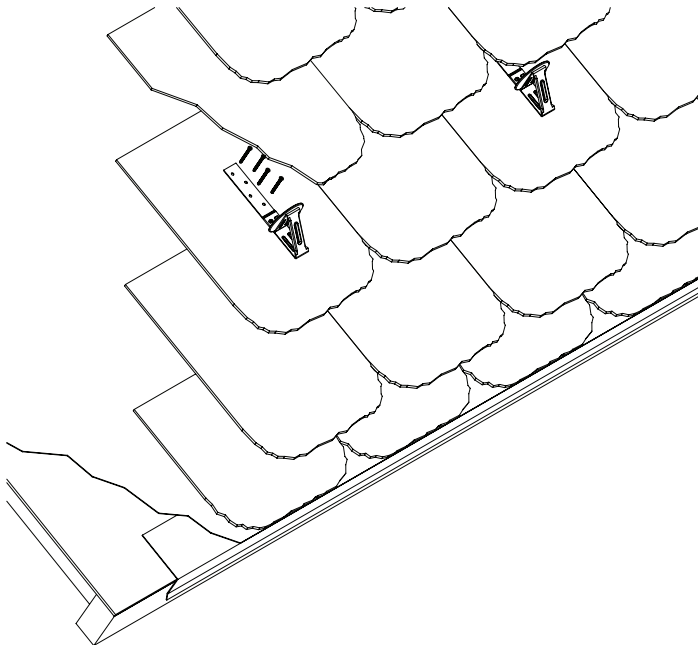
- Electro-galvanized steel (ASTM A879)
- Hot-dipped galvanized steel
- Mill finish Copper
- Mill finish Aluminum
- Powder coating available in RAL Standard colors
- Visit <http://tra-mage.com/color-chart/> to see color chart

NOTE: Due to specific job conditions, TRA-MAGE will only warranty a snow retention system/layout that has been designed by TRA-MAGE.



FOR NEW CONSTRUCTION

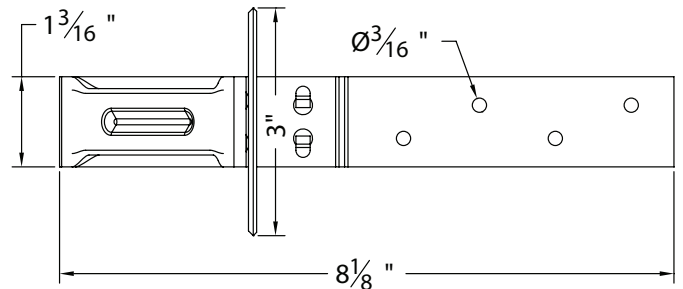
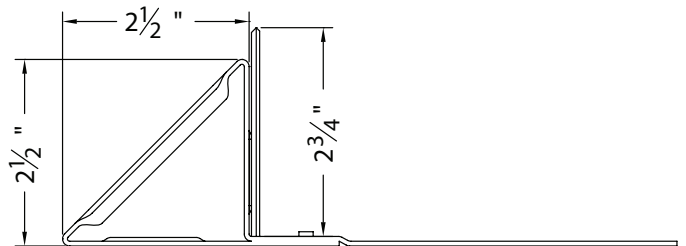
USED ON: SIMULATED SLATE, SHAKE, ASPHALT SHINGLE & METAL ROOFS



Bracket to be installed using (4) #8 stainless steel screws or roofing nails fastened through roofing material and sheathing below.

BRACKET INSTALLATION

DO NOT SCALE



BRACKET DIMENSIONS

DO NOT SCALE