

PANEL WIDTH: \_\_\_\_\_

**X (RIB HEIGHT)** = \_\_\_\_\_

PANEL MFG: \_\_\_\_\_

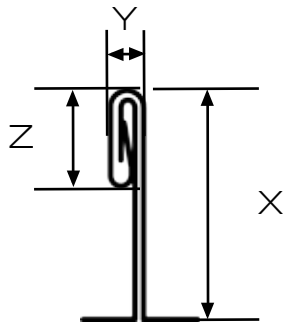
**Y (RIB WIDTH)** = \_\_\_\_\_

MODEL: \_\_\_\_\_

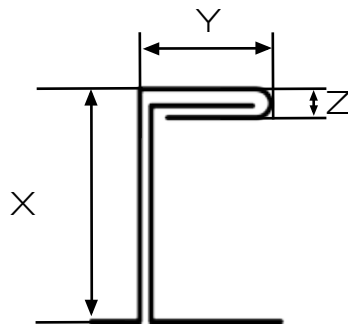
**Z (RIB SEAM)** = \_\_\_\_\_

COLOR: \_\_\_\_\_

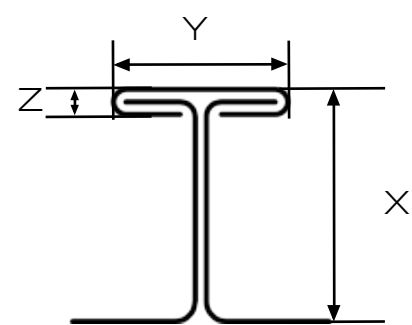
Items in **bold** are mandatory



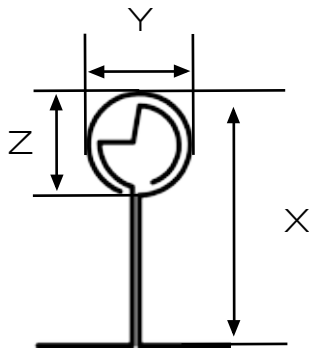
DOUBLE LOCK



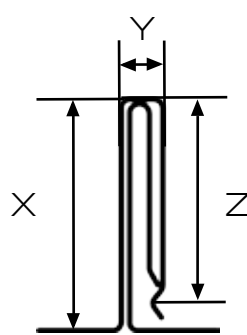
SINGLE LOCK "L"



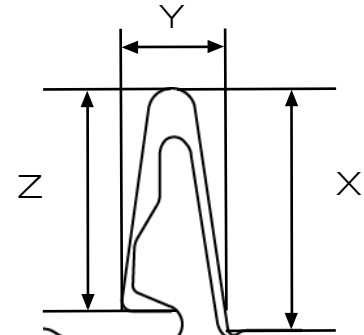
TEE SEAM



ZIP RIB



SNAP LOCK

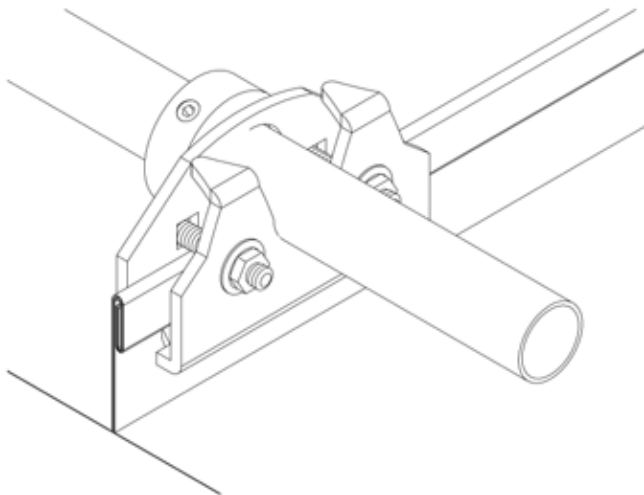


SKYLINE®

DRAWINGS/NOTES:

## PRODUCT Highlights:

- Clamp-ons are designed to work with virtually any seam type
- Easy-to-install
- **Does not penetrate** standing seam panel
- **Does not restrict** thermal expansion/contraction of the panel
- Firmly **attaches under the hem** to provide superior strength
- Secured with a bolt system to **eliminate sliding, detaching and thread stripping**
- Available in a **one** or **two** pipe system
- Two layers of rust protection available (zinc plated and powder coated)
- Can be powder coated for durability and protection from the elements
- Available in standard or custom colors to match panel/roofing color
- **Engineered system**
- Custom layouts provided
- Manufactured from recycled material



## PRODUCT Information:

### DESCRIPTION:

- CLAMP-ON SNOW FENCE:  
Available in a one or two pipe system
- PIPE:  
10' sections  
3/4" Pipe (1"OD)
- UNIONS:  
Connect pipe lengths
- END CAPS:  
Seal open end of pipe
- COLLARS:  
Prevent horizontal movement; Prevent pipe separation
- ICE FLAGS:  
Reduce snow and ice sliding under pipe

### MATERIALS/FINISHES:

- Steel :: 3/16" (ASTM A36)
- Copper :: 1/4" (ASTM B124)
- Aluminum :: 1/4" (ASTM B308 6061)
- Cor-Ten® :: 3/16" (ASTM A606)
- Powder Coated Steel